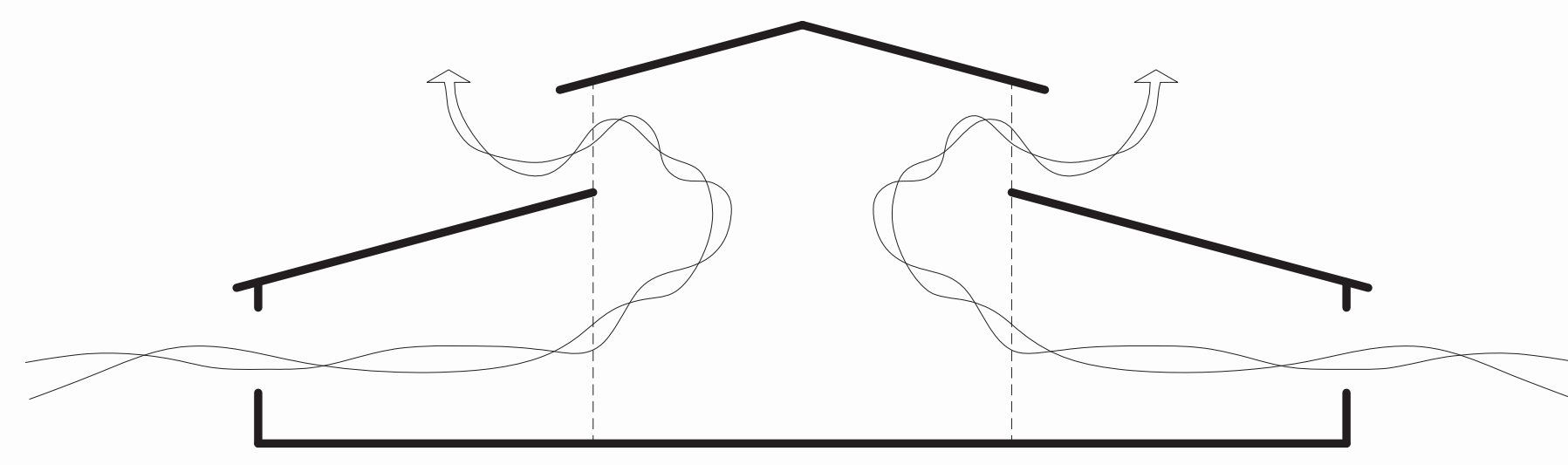
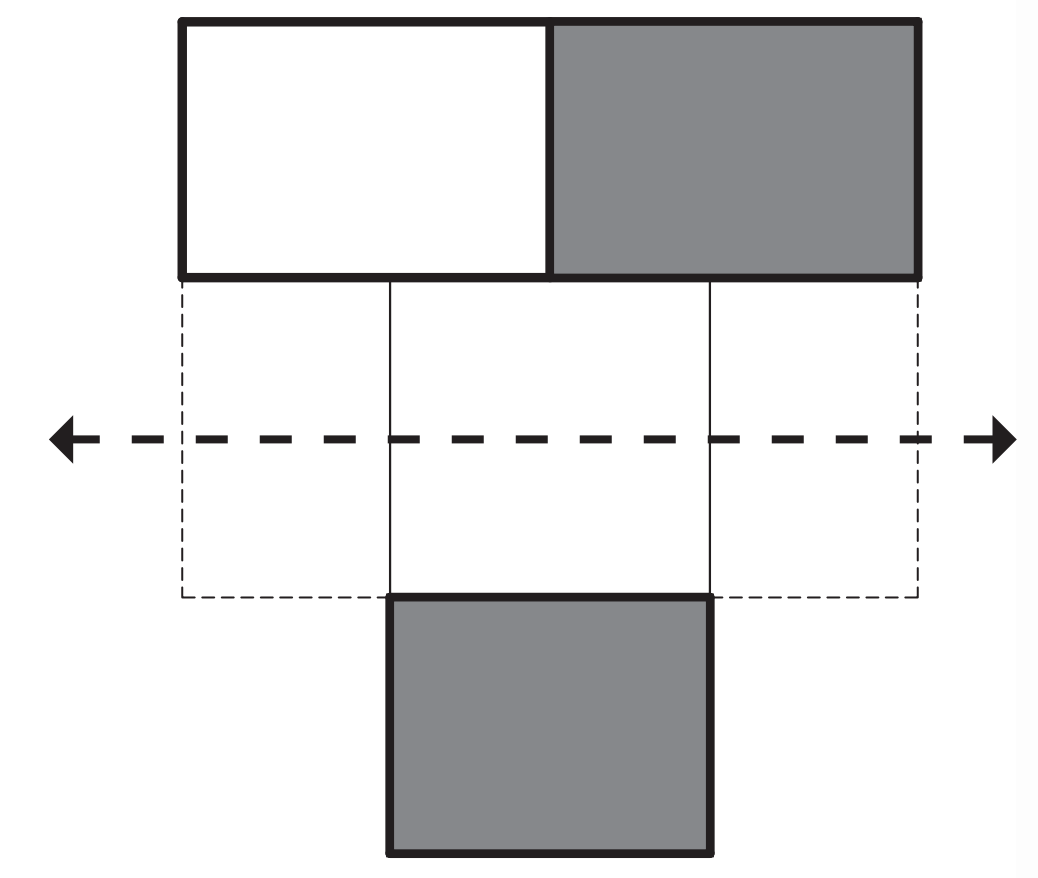
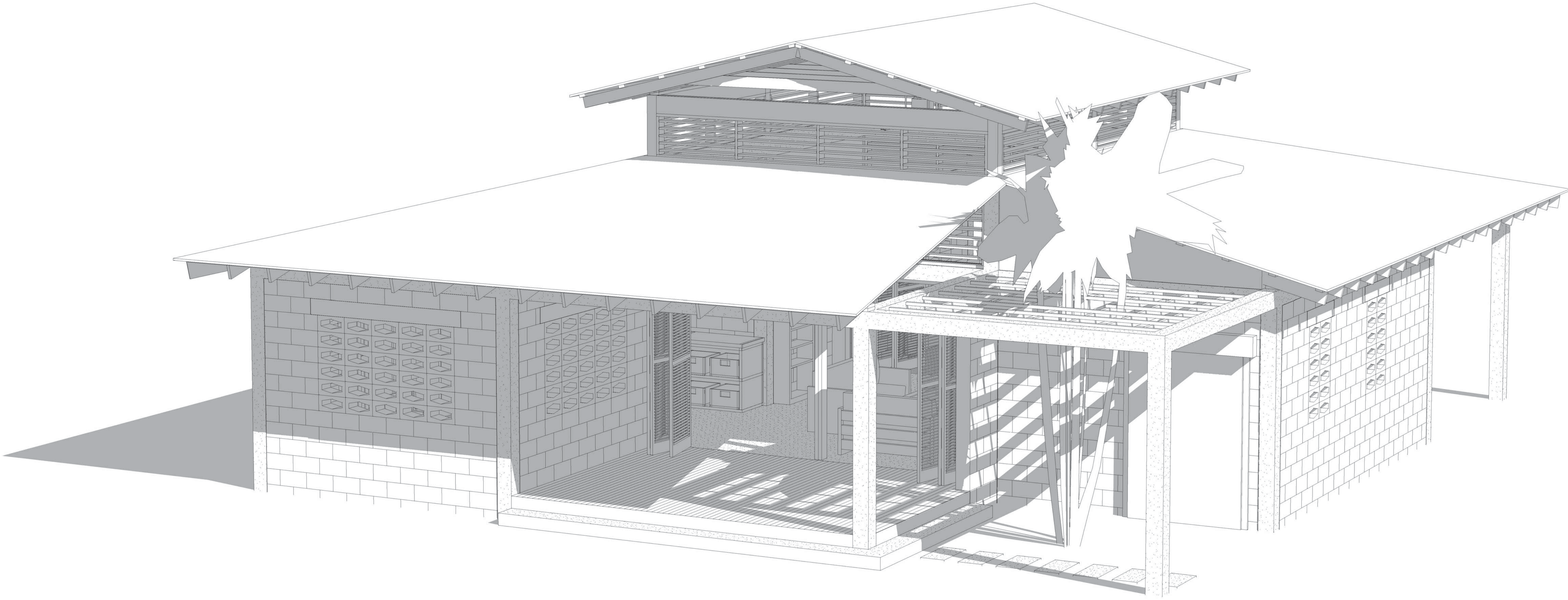


UNIVERSITY OF TENNESSEE
COLLEGE OF ARCHITECTURE AND DESIGN

UT SPRING 2012

HAITI CHRISTIAN DEVELOPMENT FUND
Fond-des-Blancs Housing Development
House for Young Professional Patriate



2 Bedrooms (+1 BR optional addition)
2 Full Baths
1,128 sqft.

LLBEN

Cover

A001

HAITI CHRISTIAN DEVELOPMENT FUND
Fond-des-Blancs Housing Development
House for Young Professional Patriate

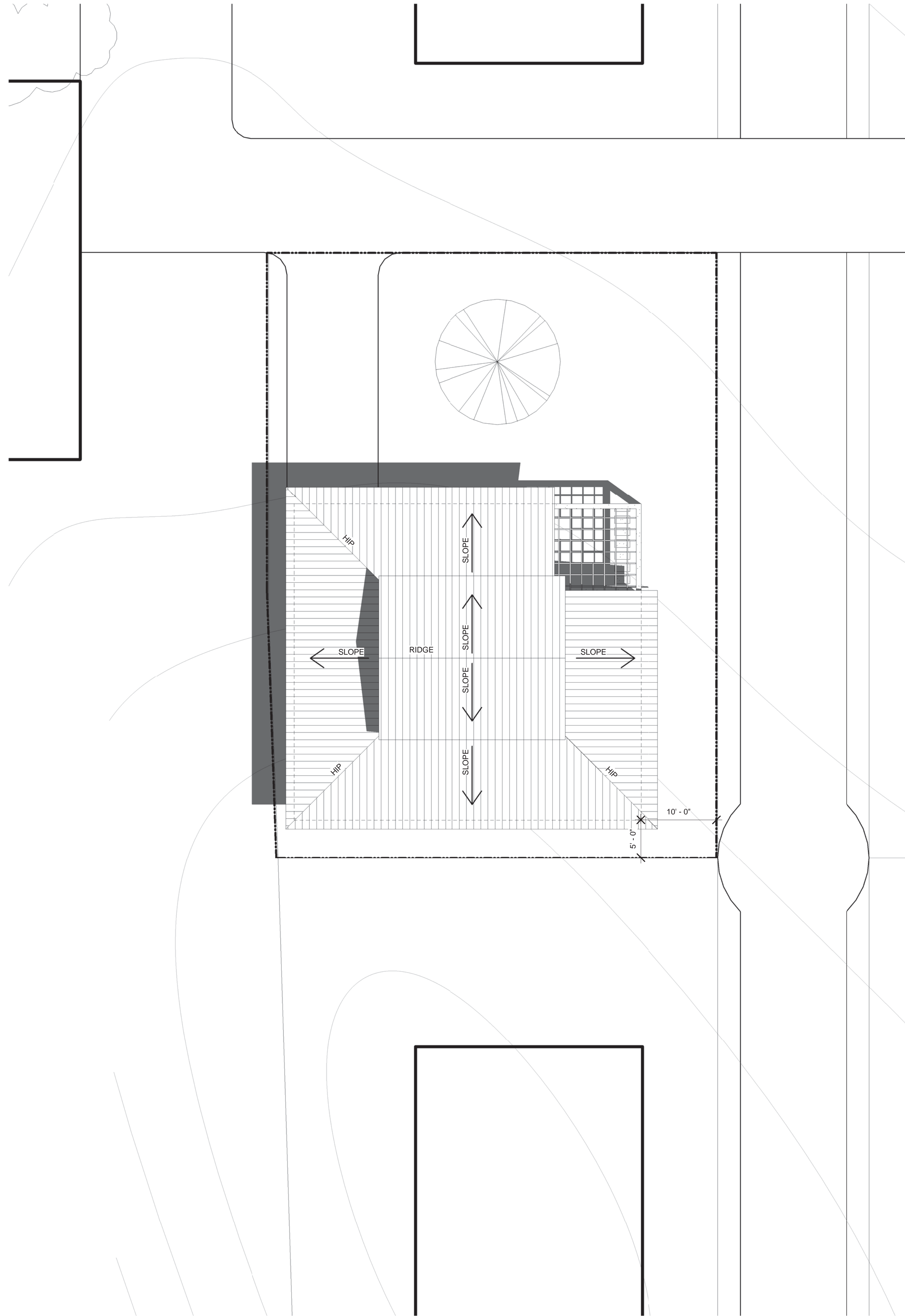
LLBEN

Site Plan & Roof Plan

A101



① Site
1" = 50'-0"



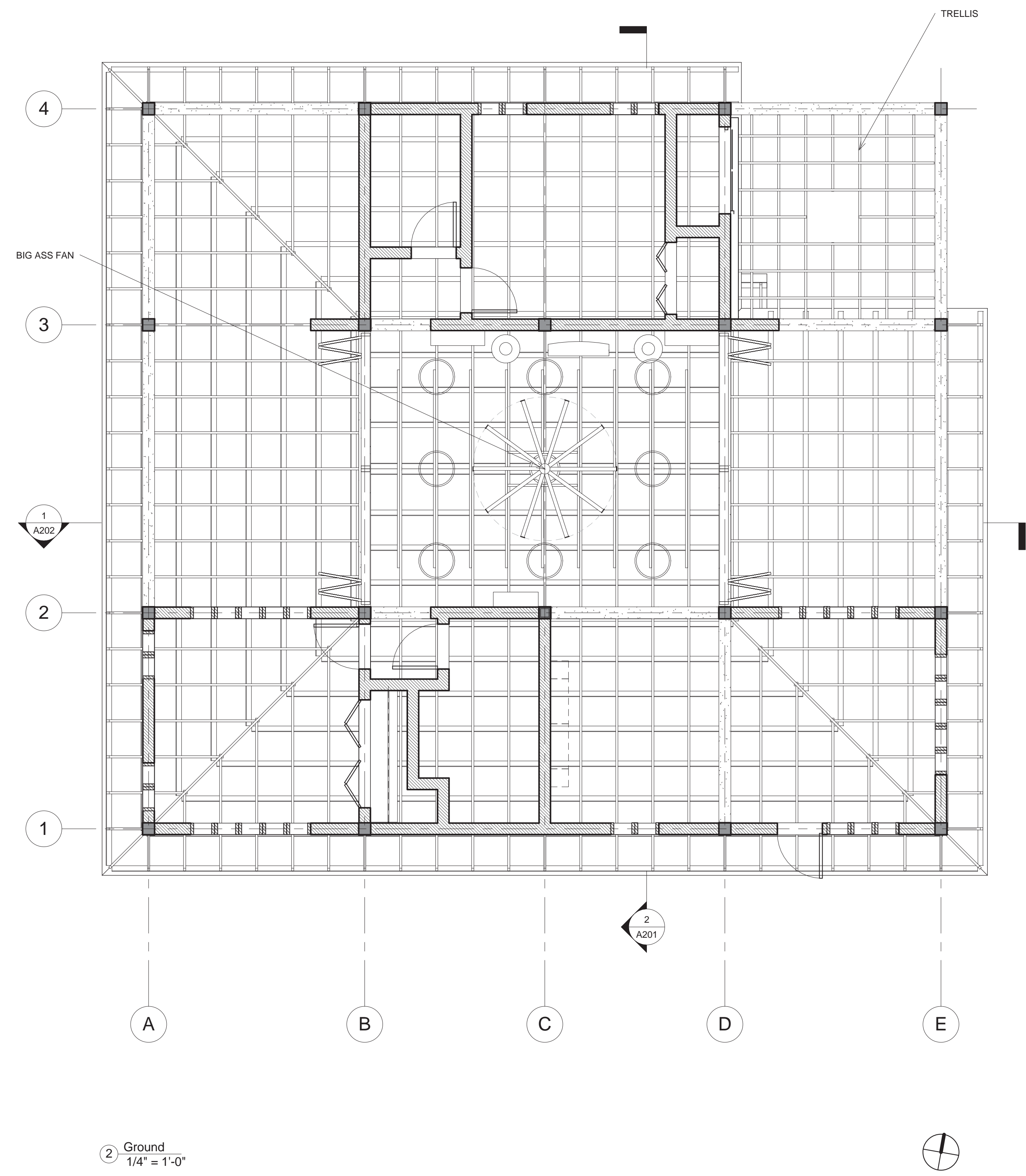
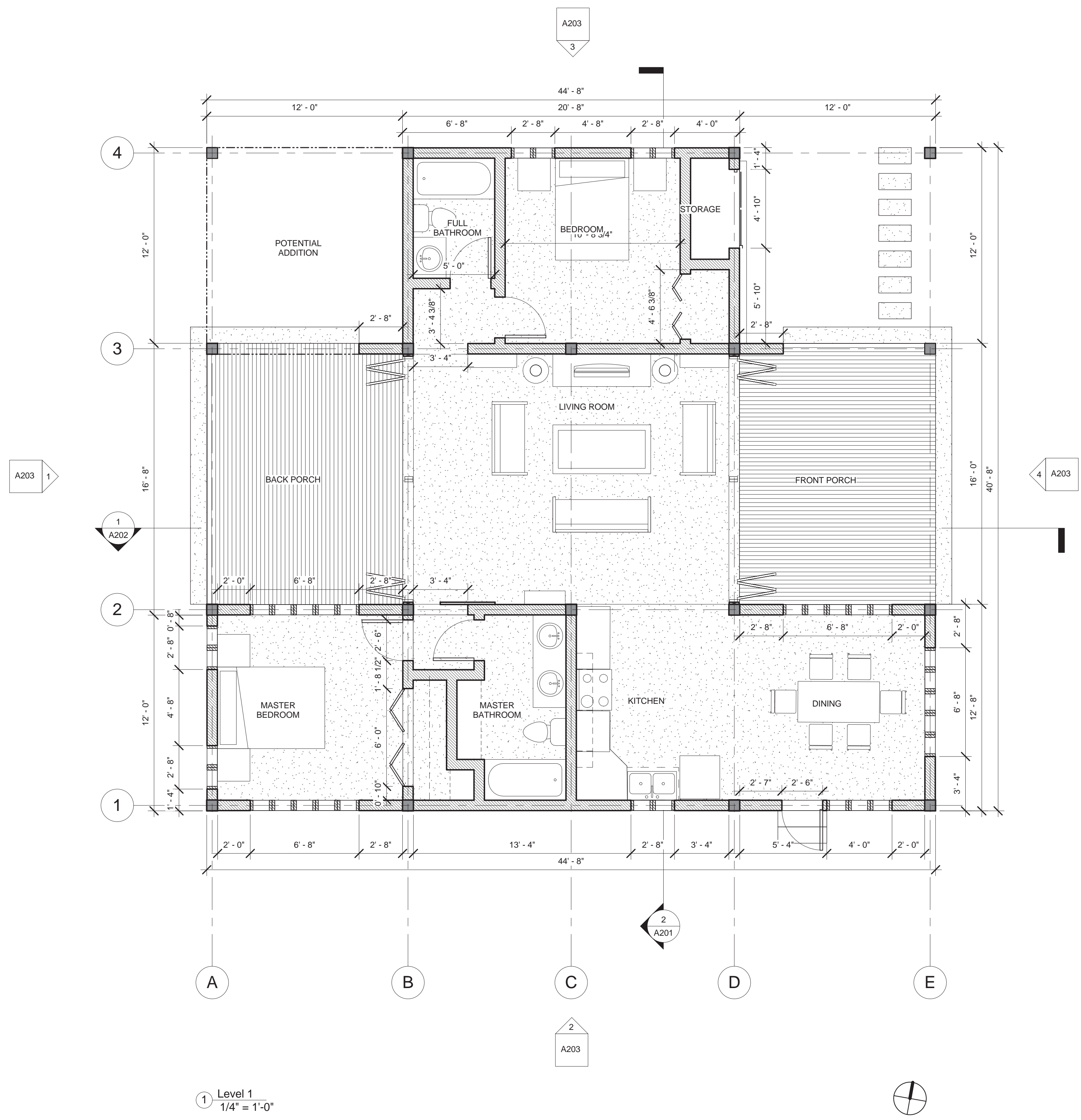
② Roof Plan
1/8" = 1'-0"

**HAITI CHRISTIAN DEVELOPMENT FUND
Fond-des-Blancs Housing Development
House for Young Professional Patriate**

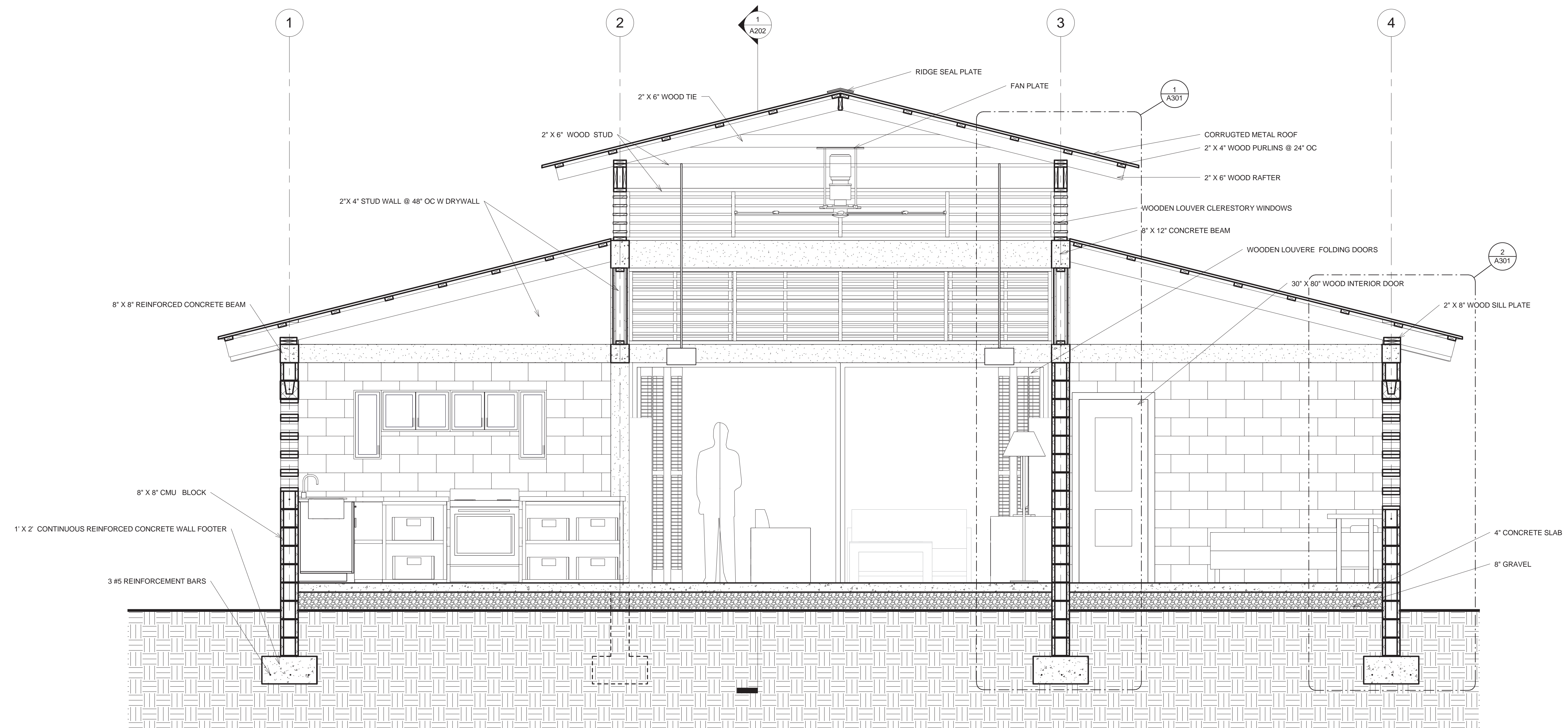
LLBEN

Floor Plan & RCP

A102



HAITI CHRISTIAN DEVELOPMENT FUND
Fond-des-Blancs Housing Development
House for Young Professional Patriate



Section 1
1/2" = 1'-0"

LLBEN

Section 1

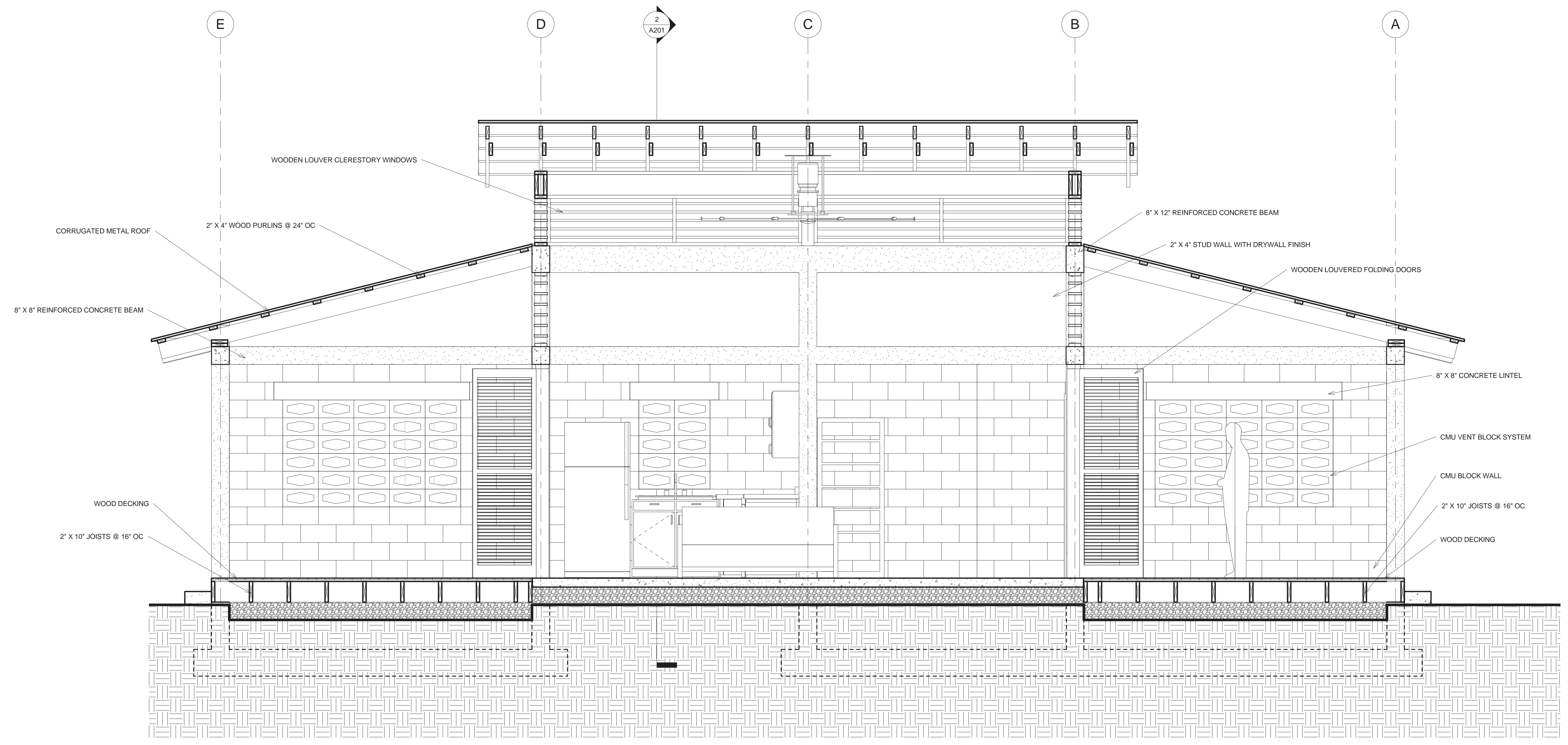
A201

HAITI CHRISTIAN DEVELOPMENT FUND
Fond-des-Blancs Housing Development
House for Young Professional Patriote

LLBEN

Section 2

A202



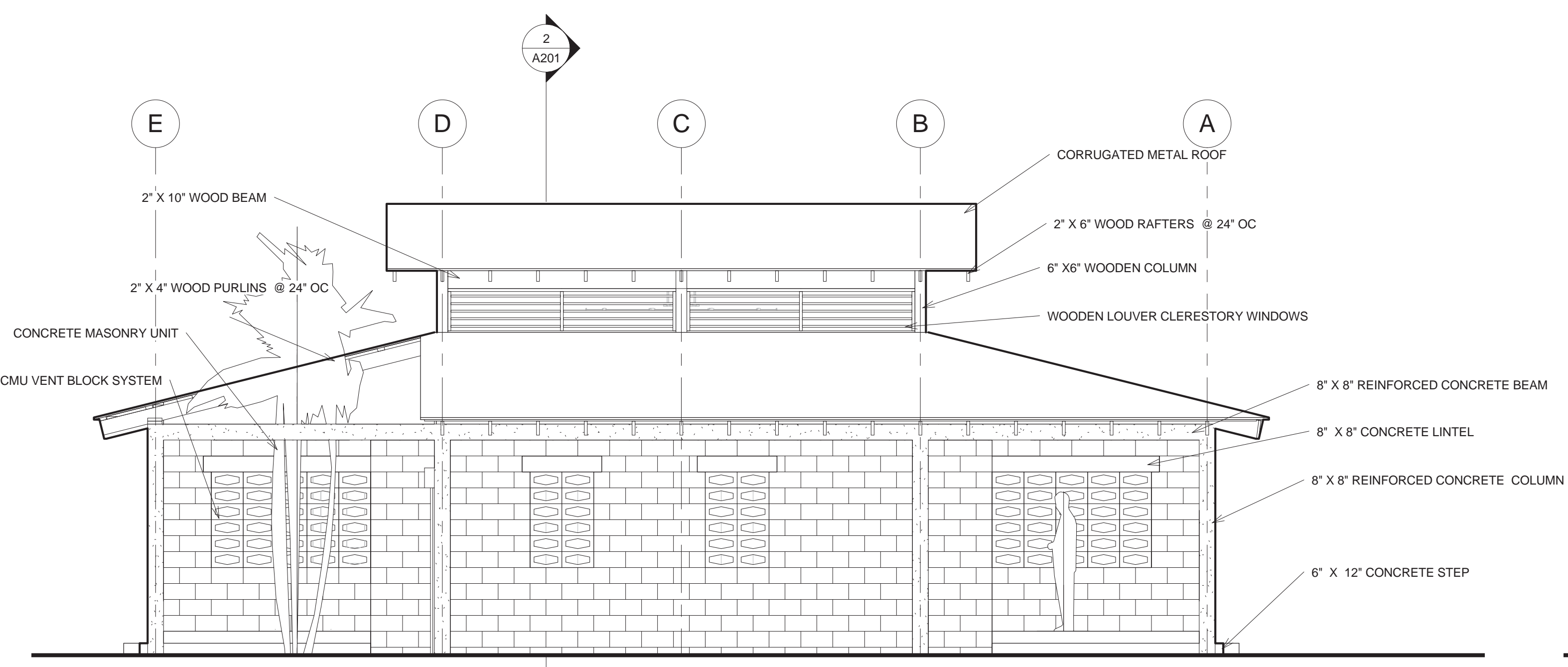
1 Section 2
1/2" = 1'-0"

HAITI CHRISTIAN DEVELOPMENT FUND
Fond-des-Blancs Housing Development
House for Young Professional Patriote

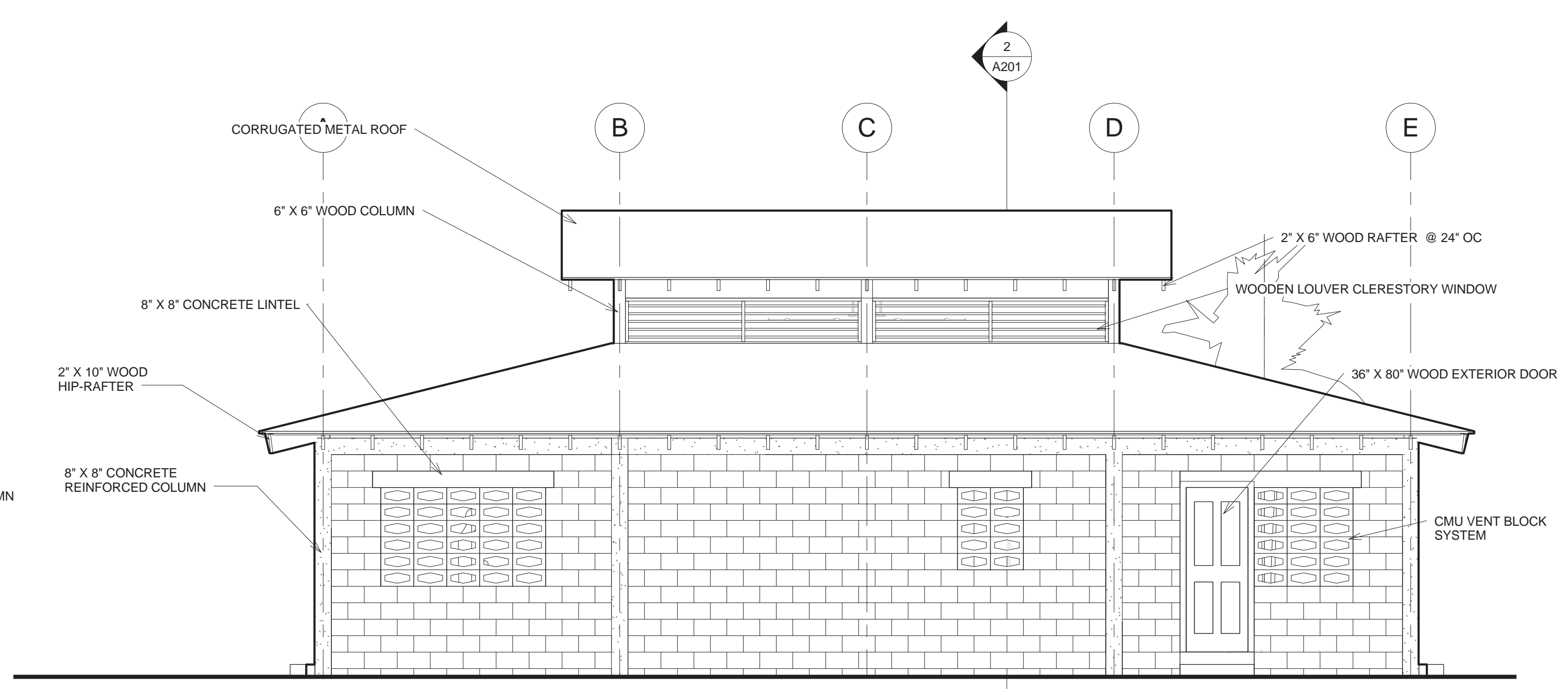
LLBEN

Elevations

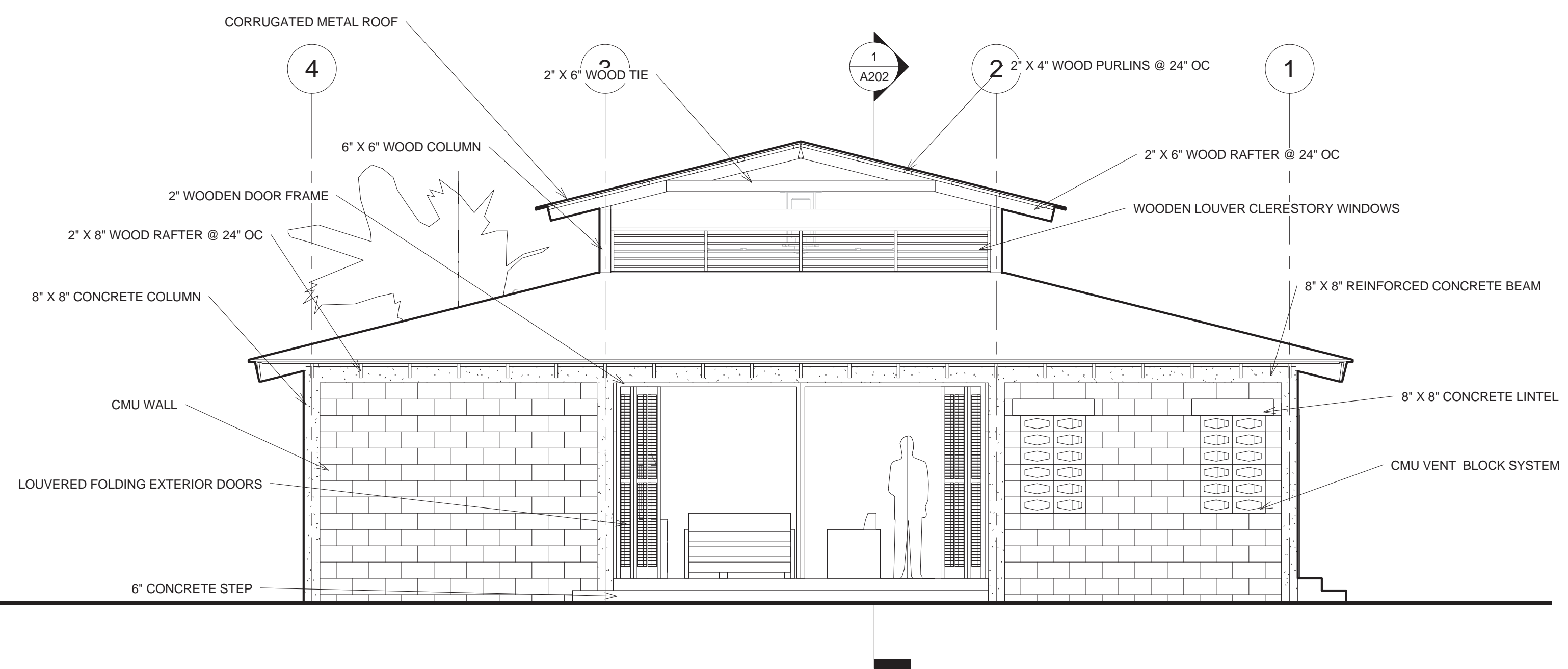
A203



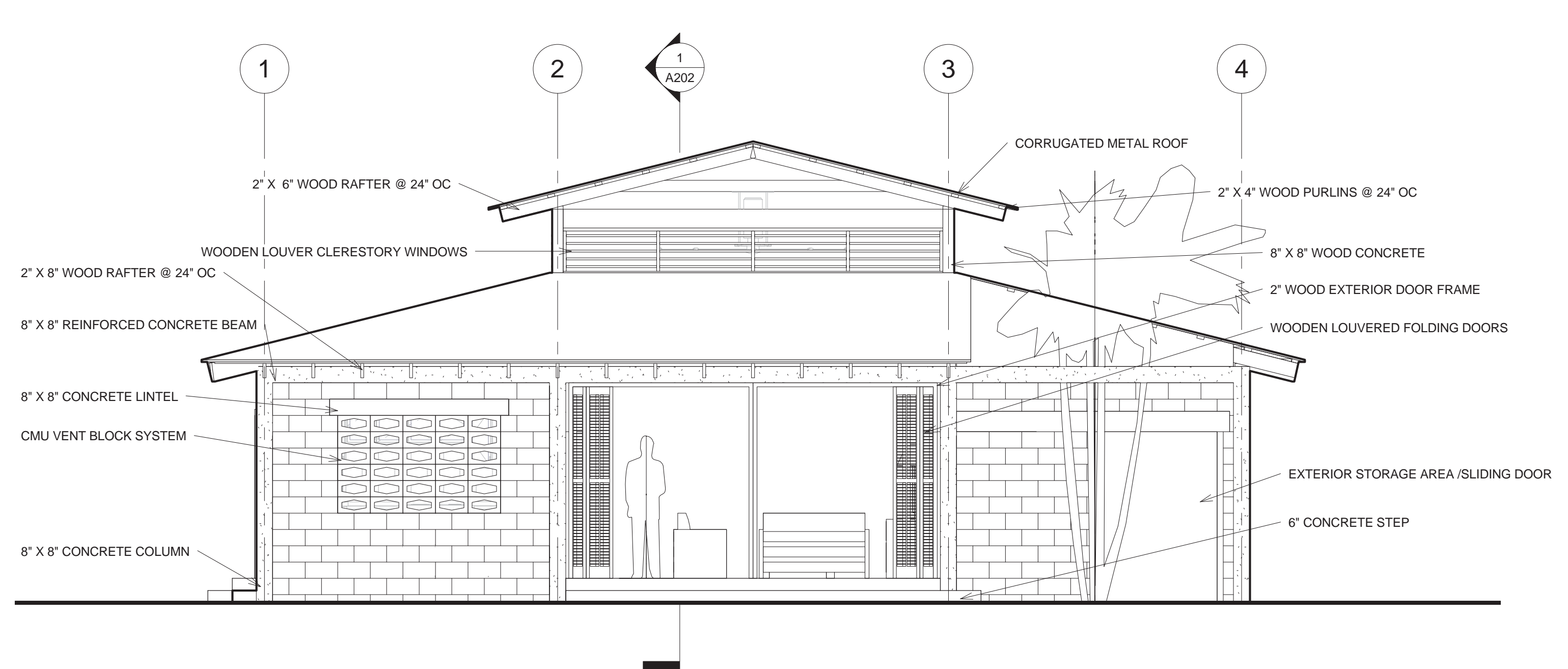
③ North
1/4" = 1'-0"



② South
1/4" = 1'-0"



① West
1/4" = 1'-0"



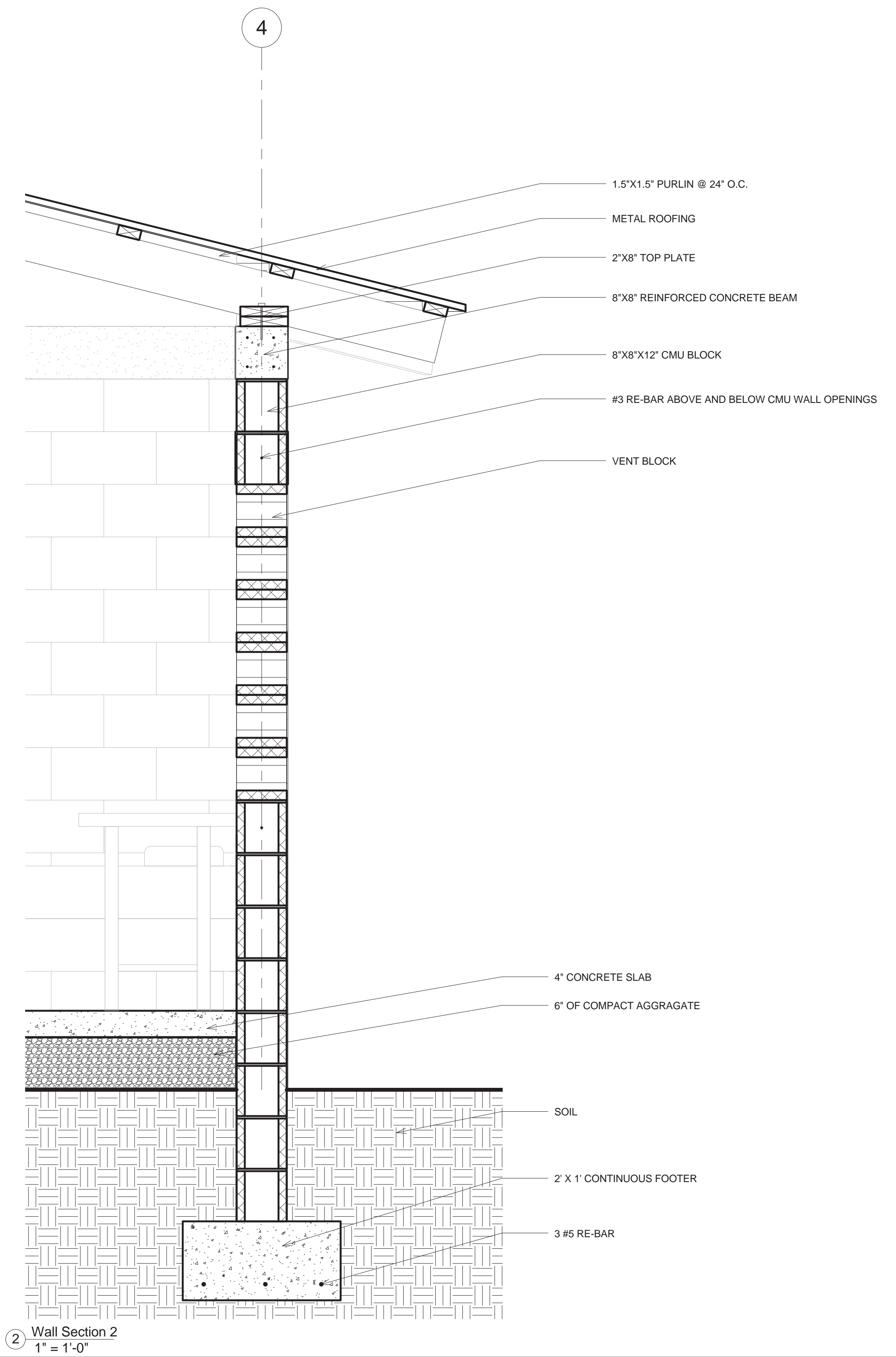
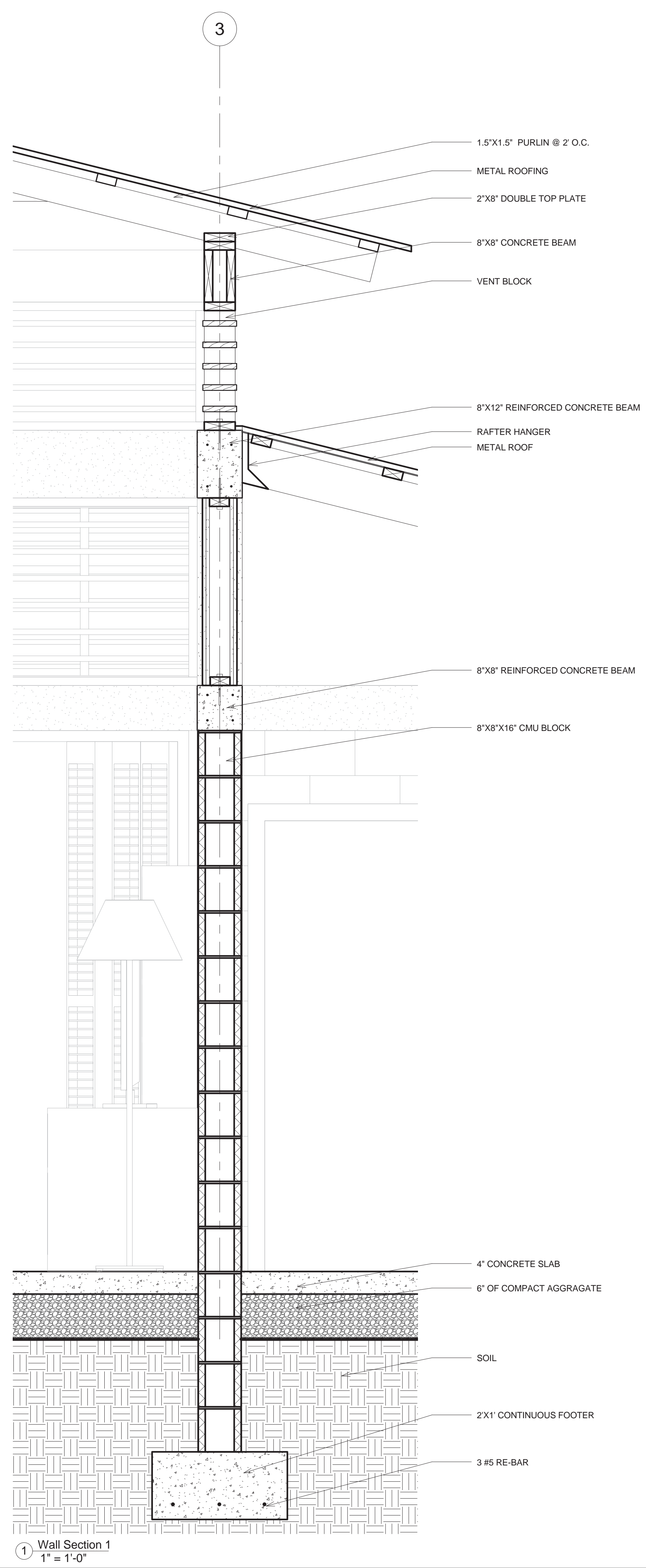
④ East
1/4" = 1'-0"

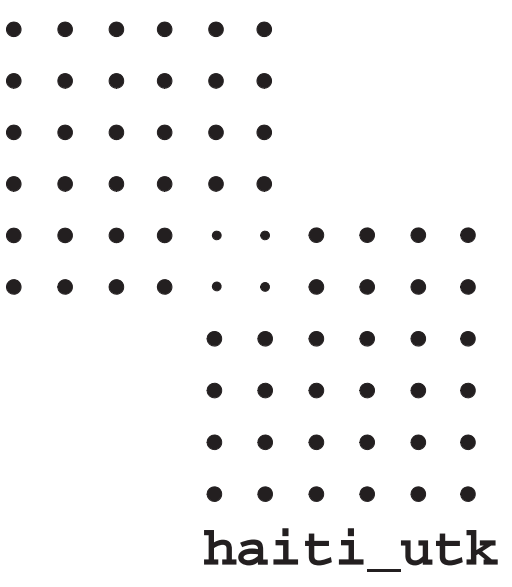
HAITI CHRISTIAN DEVELOPMENT FUND
Fond-des-Blancs Housing Development
House for Young Professional Patriote

LLBEN

Wall Sections & Details

A301





UNIVERSITY OF TENNESSEE
COLLEGE OF ARCHITECTURE AND DESIGN

UT SPRING 2012

HAITI CHRISTIAN DEVELOPMENT FUND
Fond-des-Blancs Housing Development
House for Young Professional Patriate



Designer

Perspectives

T001